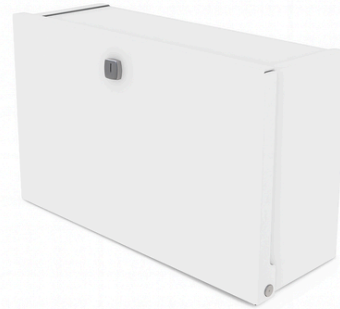
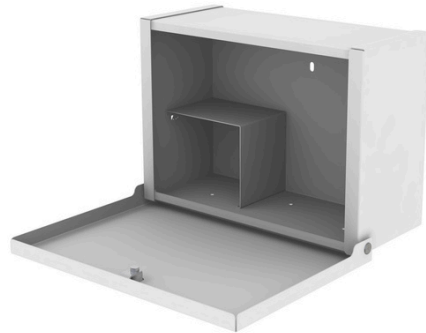


Patient Drug Cabinets



PDC001/03/05/07

The Shuttleworth Patient Drug Cabinet range has been specifically designed to ensure the safe, secure, and organised storage of patient-specific medications across hospitals, clinics, and care environments. These cabinets meet the highest infection control and security standards required within the NHS and wider healthcare services.

Designed specifically for hospitals, clinics, and care facilities, these cabinets help maintain patient confidentiality and medication security, supporting safe dispensing practices and regulatory compliance.

Each cabinet is fully welded and manufactured from mild steel, finished in a white epoxy powder coat for ease of cleaning and infection control.

Units are wall-mountable for convenient bedside access and feature secure locking mechanisms. Cam lock versions are supplied with two keys and are BS3621 compliant, with digital lock options also available to suit various security protocols.

The cabinet range is available in four sizes to accommodate different medication storage needs.

Code	Width	Depth	Height
PDC001	31cm	10.5cm	26cm
PDC003	36cm	15.5cm	26cm
PDC005	43.3cm	15.5cm	23cm
PDC007	36.7cm	15.5cm	43.5cm

Configuration

PDC001: Small Patient Drug Cabinet with Cam Lock (Digital Lock Version Available)

PDC003: Medium Patient Drug Cabinet with Cam Lock (Digital Lock Version Available)

PDC005: Large Patient Drug Cabinet with Cam Lock (Digital Lock Version Available)

PDC007: X-Large Patient Drug Cabinet with Cam Lock (Digital Lock Version Available)

